



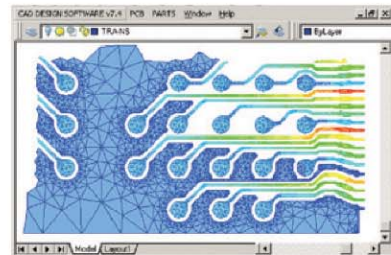
CAD Integration with Sage

Link your Drawing Office with the ERP system and bring your CAD Bills of Material directly in Sage.

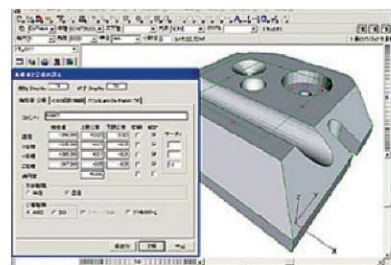
Bill of material information is regularly generated as part of the design process which is increasing achieved using a CAD or PDM platform. That same BOM data is valuable to the MRP and Product Planning system and invariably available by interrogating the CAD system.

The Flexible Bill of Materials Import module from Defacto provides a simple one-stop easily configured interface for integrating your CAD system to Sage and can be used with the Line 500 and Sage 1000 Bills of Materials or Product Management module. The product has been used successfully to link Sage Line 500 with a number of CAD packages including AutoCAD, Cadnetix, TurboCad and Pro/Engineer and to also import legacy information from systems such as MAAPICS.

The module can handle user defined flat file formats with either delimited fields (CSV for example) or fixed width columns. A direct SQL interface is also available subject to the capabilities of the CAD system.



Within the module options are available to create assemblies, load and update component lists to existing assemblies and create new stock items automatically during the import run. Single-level and multi-level bills can be accommodated. All data items created conform to the Sage business rules. Full validation and audit functions are provided in report and diagnostic format.



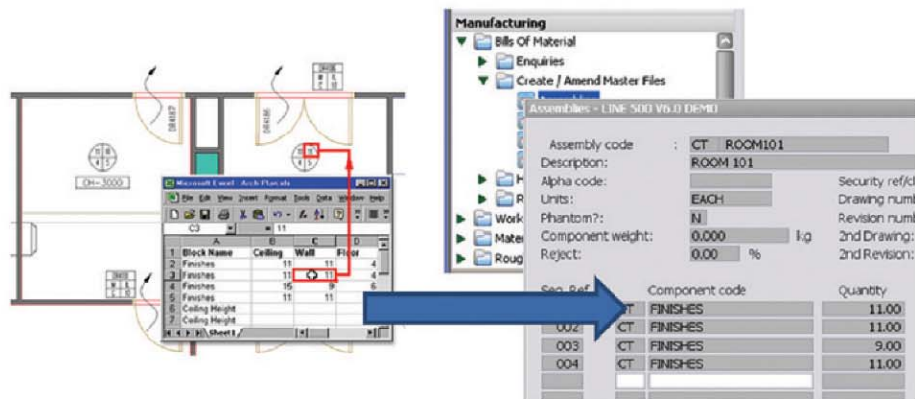
- Import CAD BoMs to Sage
- Single or Multi-Level Bills
- Auto-create New Parts
- Error Checking
- Validation Reports
- Integrate PDM Systems
- Import Legacy Data
- Support for Product Management
- Universal Import Option
- WIP Tracking Interface
- Shop Floor Data Capture

For more sophisticated interfaces, the Defacto Universal Import module is also available. As well as providing similar Inventory, BOM and Route imports, this system also supports the creation, issuing and completion of works orders, various inventory transactions and a series of functions for managing sales order allocation and purchasing. Standard KPI scorecards including the classical Financial, Customer and Internal Perspectives can be created along with views on Customer Service, Quality Management, and Vendor Relationship measures.

Defacto also supplies a WIP Tracking interface which allows Sage to be updated from Time Clock systems for clocking on and off of jobs at works centres and can form the hub of a shop floor data capture solution.

Our consultants are also available to discuss requirements and assist with the selection and implementation of the best solution.

Contact Defacto for details of its range of interface tools.



Defacto Solutions Limited
 Defacto House
 Orix Corner
 631 Chesterfield Road
 Sheffield S8 0RX England

Tel: +44 (0) 114 255 8599
 Fax: +44 (0) 114 229 0917
 Email: def_info@defactosolutions.co.uk

All trademarks are acknowledged